




Thinking about University?

A guide for New Zealand students, parents and whānau





Piki mai Kake mai Nau mai Haere mai ki Te Pōkai Tara

Welcome to our 'Thinking about University? A guide for NZ students'.

This guide is to support students, and their whānau when thinking about studying at one of New Zealand's eight universities. It is a starting point to help you start thinking about how to successfully move into university life.

Once you've read this guide, you will be able to search each university website for more detailed information.

This guide has been collated by Universities New Zealand, on behalf of all eight universities. For more information see

universitiesnz.ac.nz

or contact us at
StudentGuide@universitiesnz.ac.nz

Information for international students is on our website at

**[universitiesnz.ac.nz/
international-students](http://universitiesnz.ac.nz/international-students)**

Disclaimer – Although every effort has been made to ensure accuracy, it is recommended you check university websites for the latest information.

Universities New Zealand – Te Pōkai Tara is the representative body for New Zealand's eight universities.

June 2017



Chapter	Page
1 _____Welcome	2
2 _____Why a University Education?	4
3 _____Choosing a University	6
4 _____Introducing New Zealand's Universities	8
5 _____What to Study and Where?	26
6 _____Get Ready Checklist!	52
7 _____Get In!	56
8 _____Get Sorted!	62
9 _____Get More Experience!	68
10 _____Student Life: A Typical Day!	70
11 _____Glossary	72

Why a University Education?

Think of a university education as an investment. It opens more options and opportunities for your future. We know that graduates from universities are happier, healthier, and they earn more.



University is also an opportunity for you to

ENGAGE

With leading teachers and researchers from a top 3% world-ranked university.

CONNECT

Through internships and work placements with employers and industry.



DEVELOP

Specialist knowledge. Critical thinking, research and analytical skills. Communication, interpersonal, and information technology skills.

ENHANCE

Cultural understanding, global awareness and community involvement.

DISCOVER

Student life – student groups, clubs, activities.

EXPERIENCE & EXPLORE

Study abroad and student exchange programmes.

Choosing a University

A little planning will help you make the most of the opportunities at university.

All eight New Zealand universities are ranked in the top 3% in the world and offer quality tertiary education and student support – so they're all good options!

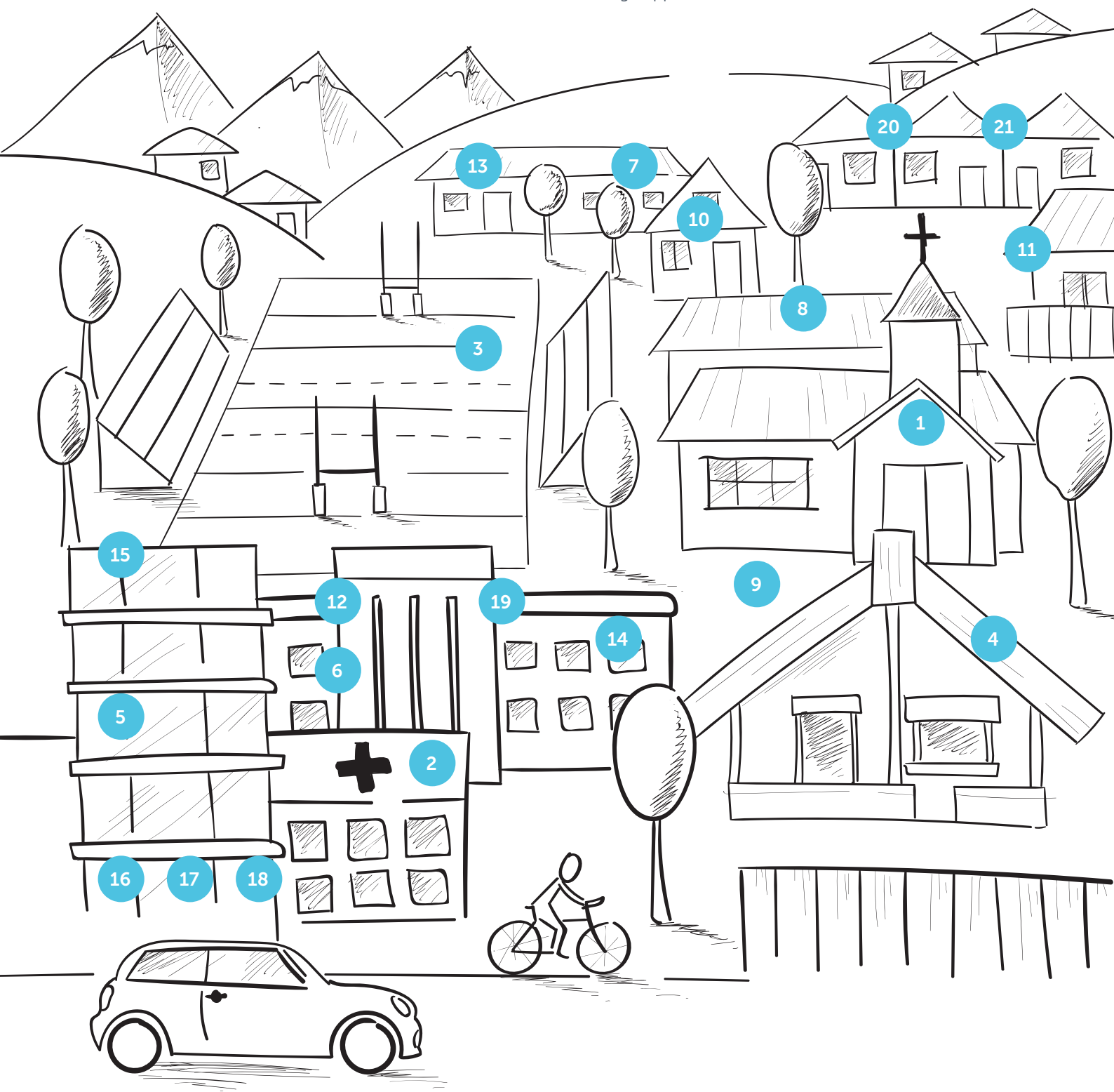
Some things that you may want to consider are:

- What are my interests and strengths? What do I love doing? What are my future goals?
- Which universities offer what I want to study?
- Where is the campus located? Is it in a city, out of town or close to home?
- What is the student population?
- What is the vibe of the university?
- Does the university have all the facilities I'd want?
- Is there university accommodation – Halls of Residence?
- What student support services are available?

A university is a community, offering a range of support services and facilities on campus to enable you to achieve at your best, and to keep you motivated while you're on your study journey. Even if you are considering studying by distance, you still have access to a range of support services.

Facilities & Services

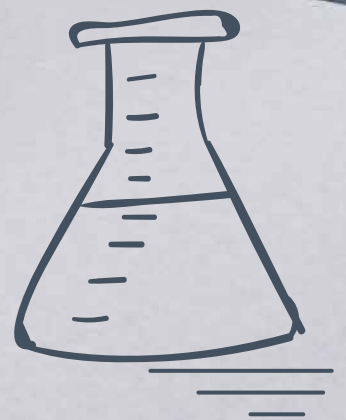
- | | | | | | |
|---|----------------------|----|------------------------------------|----|-----------------------------------|
| 1 | Chaplaincy | 8 | Counselling | 15 | Admission and Enrolment |
| 2 | Medical Centres | 9 | Disabilities | 16 | Academic Grievances |
| 3 | Sport and Recreation | 10 | Book shops | 17 | Advocacy |
| 4 | Marae | 11 | Restaurants and Cafes | 18 | Fees and Finance |
| 5 | Careers Centres | 12 | Accommodation / Halls of Residence | 19 | Scholarships |
| 6 | Student Unions | 13 | Student Clubs | 20 | Māori Student Academic Support |
| 7 | Child Care | 14 | Academic and Learning Support | 21 | Pasifika Student Academic Support |



Introducing New Zealand Universities

Ngā wānanga o te motu

There are eight universities in New Zealand, offering a wide range of study opportunities, and all are ranked within the world's top 500 (3%). As institutions of higher learning, they not only develop your professional skills, but also important life skills like analysis; critical thinking, communication, and innovation that you will take through your whole career, not just your first job.





Te Whare Wānanga o Tāmaki Makaurau

University of Auckland

New Zealand's leading University

Main campus: City Campus, Auckland

Other campuses: Tāmaki Innovation Campus, St Johns; Newmarket Campus; Epsom Campus; Grafton Campus; Manukau

Tai Tokerau Campus: Whangarei

The University is ranked as New Zealand's leading university with degrees that are world-class and internationally recognised. Auckland's research-led programmes attract a high level of teaching professionals. You will learn from people who are passionate about their chosen fields.

Faculties

Arts

Business School

Creative Arts and Industries

Education and Social Work

Engineering

Law

Medical and Health Sciences

Science

Auckland Bioengineering Institute

Liggins Institute

Student population

Total (EFTS)	33,118
Total (Students)	41,866
Pre-degree	823
Undergraduate	25,049
Postgraduate	15,063
Domestic	35,183
International	6,683
Māori	3,183
Pasifika	3,609
Part-time *	15,388
Full-time *	26,478

*2016 data. Source for table: Education Counts, Tertiary Statistics/Participation.

0800 61 62 63 | auckland.ac.nz



UniofAkl



University of Auckland



snapuoa



AucklandUni



universityofauckland



UNIoFAUCKLAND

E Ngā Ākonga Māori

Tū ake i te kei o te waka mātauranga. Tū ake nei i Te Whare Wānanga o Tāmaki Makaurau. Nau mai, haere mai

Waipapa Marae (City campus) and Tutahi Tonu Marae (Epsom Campus) provide a home away from home for taira Māori and their whānau.

The Equity Office's Kaitakawaenga Māori provides information and support to taira and their whānau including advice on entry, enrolment, scholarships and financial opportunities, as well as pastoral guidance.

Tuākana is the university-wide learning community for enhancing the success of taira Māori, offering study wānanga, whakawhanaungatanga and workshops.

Ngā Taira Māori is the Māori student association located at the University of Auckland. They are responsible for advocating better conditions for taira Māori on campus.

WEBSITE KEY WORD SEARCH: Māori, Tuākana
www.auckland.ac.nz/maoristudents



Pacific at University

Talofa lava, Malo e lelei, Kia orana, Bula vinaka, Fakatalofa atu, Fakaalofa lahi atu, Halo oloketa, Ia orana, Mauri, Aloha, Malo ni, Hafa adai.

Our Fale Pasifika is the centre of the university Pacific community.

The Equity Office's Pacific Equity Adviser provides a range of student support services including guidance with entry, enrolment and scholarship opportunities.

Tuākana is the university-wide learning community for enhancing the success of Pacific students offering fonotaga, and workshops.

WEBSITE KEY WORD SEARCH: Pacific, Tuākana
www.auckland.ac.nz/pacificstudents





Te Wānanga Aronui o Tāmaki Makau Rau

Auckland University of Technology

The University for the Changing World

Main campus: Auckland

Other campuses: North Shore campus;
Manukau campus

The University reflects the changing world, and emerging environments and industries. Established relationships with employers make teaching and research relevant to current and future industry, which shows in the University's 95% graduate employment rate.

Faculties

Business, Economics and Law

Culture and Society

Design and Creative Technologies

Health and Environmental Sciences

Māori and Indigenous Development

Student population

Total (EFTS)	19,605
Total (Students)	26,670
Pre-degree	2,980
Undergraduate	19,125
Postgraduate	5,470
Domestic	21,905
International	4,765
Māori	2,335
Pasifika	3,420
Part-time *	6,765
Full-time *	15,135

*2016 data. Source for table: Education Counts, Tertiary Statistics/Participation.

0800 288 864 | aut.ac.nz



autuni



AUT



AUTUniversity



autuni



autuni

E Ngā Ākonga Māori

E te hunga pikoko ki te mātauranga, nau mai piki mai ki te Wānanga Aronui o Tāmaki-makau-rau

Ngā Wai o Horotiu Marae is located at the city campus. It serves as a whānau, cultural and spiritual centre.

There are programmes and activities across the university that are dedicated to taura Māori achievement and success.

The Māori Liaison Services can help with; advice (academic, cultural or personal), financial (scholarships and administration), advocacy (faculty and community), and mentors.

Titahi Ki Tua (TKT) offers Māori AUT students a place where they can come together to share ideas, share identity, draw support, socialise, meet other taura Māori and practice culture – kapa haka, all in a marae environment.

WEBSITE KEY WORD SEARCH: Māori, Māori Student Support
www.aut.ac.nz/community/maori



Pacific at University

Talofa lava, Malo e lelei, Kia orana, Ni sa bula vinaka, Halo olaketa, Namaste, Kam na mauri, Fakaalofa lahi atu, Ia orana, Mahalo, Malo ni, and warm Pasifika greetings.

AUT offers support for our diverse Pacific communities through the Student Hub.

iMAPS (Inspiring Māori and Pasifika Success) programme holds weekly study sessions to provide academic and learning support for students.

There are many Fono rooms located on campus for studying, group assignments, or just to relax.

WEBSITE KEY WORD SEARCH: Pacific, Pacific Support
www.aut.ac.nz/community/pasifika



THE UNIVERSITY OF
WAIKATO
Te Whare Wānanga o Waikato

Te Whare Wānanga o Waikato

University of Waikato

Ko Te Tangata, For the People

Main campus: Hamilton

Other campus: Tauranga

The University of Waikato is a true reflection of New Zealand culture; we are ambitious, innovative thinkers who let nothing get in the way of achieving big dreams. We provide a world ranked education in a supportive environment.

Faculties

Arts and Social Sciences

Computing and Mathematical Sciences

Education

Science and Engineering

Law

Māori and Indigenous Studies

Waikato Management School

Student population

Total (EFTS)	9,970
Total (Students)	12,560
Pre-degree	775
Undergraduate	8,670
Postgraduate	3,540
Domestic	10,290
International	2,270
Māori	2,310
Pasifika	765
Part-time *	2,790
Full-time *	7,500

*2016 data. Source for table: Education Counts, Tertiary Statistics/Participation.

0800 924 528 | waikato.ac.nz

 [WaikatoUniversity](https://www.facebook.com/WaikatoUniversity)

 [The University of Waikato](https://www.linkedin.com/company/the-university-of-waikato)

 [waikato](https://twitter.com/waikato)

 [waikatouniversity](https://www.instagram.com/waikatouniversity)

E Ngā Ākonga Māori

Tēnā Koutou

Rarau mai e te iti, e te raahi, rarau mai ngā iwi o te motu

Rarau mai ki Te Whare Wānanga o Waikato

Te Kohinga Mārama Marae is located on the main campus. It is a place for taurira and staff to uphold and maintain the use of Te Reo and Tikanga Māori.

Te Puna Tautoko is a network of specialist support staff who are committed to taurira success. They help taurira stay connected with each other and the university.

The Māori mentoring units are dedicated to improving taurira Māori student achievement. They focus on Pastoral, Procedural and Academic support. They also hold sporting cultural and social events throughout the year.

Te Waiora o te Whare Wānanga o Waikato is one of the many taurira Māori student groups on campus.

WEBSITE KEY WORD SEARCH: Māori, Te Puna Tautoko
www.waikato.ac.nz/maori/

Pacific at University

Kia orana, Malo e lelei, Talofa, Fakaalofa lahi atu,
Bula Vinaka,

Namaste, Talohi Ni, Halo ola keta, Mauri.

Waikato offers a diverse and supportive network of student services.

There is a dedicated space to enhance the educational aspirations of Pacific students while supporting their cultural uniqueness.

Named 'The Conch', it is in the Student Centre and is available for – Fono, Seminars and workshops, social gatherings and community events.

WEBSITE KEY WORD SEARCH: Pacific, Student Services
www.waikato.ac.nz/student-life/student-experience/pasifika-at-waikato





UNIVERSITY OF NEW ZEALAND

Te Kunenga ki Pūrehuroa

Massey University

New Zealand's Defining University

Main campus: Manawatu (Palmerston North)

Other campuses: Auckland and Wellington

The University has award-winning teachers, well-connected lecturers and world-renowned researchers. Add this to our committed support staff and you have the best learning environment to help you move towards your future.

Colleges

Creative Arts

Health

Humanities and Social Sciences

Sciences

Massey Business School

Student population

Total (EFTS)	18,665
--------------	---------------

Total (Students)	31,205
------------------	---------------

Pre-degree	3,095
------------	--------------

Undergraduate	19,985
---------------	---------------

Postgraduate	9,370
--------------	--------------

Domestic	26,995
----------	---------------

International	4,210
---------------	--------------

Māori	3,250
-------	--------------

Pasifika	1,410
----------	--------------

Part-time *	15,245
-------------	---------------

Full-time *	11,745
-------------	---------------

*2016 data. Source for table: Education Counts, Tertiary Statistics/Participation.

0800 627 739 | massey.ac.nz



E Ngā Ākonga Māori

Piki mai, kake mai, nau mai, haere mai ki Te Kunenga Ki Pūrehuroa

Te Kuratini Marae at the Wellington campus is a new state of the art cultural and learning facility. Te Pūtahi-a-toi in the Manawātū provides a cultural space.

Tauira Māori at Massey have support from a range of support services; Academic, and Learning workshops, Māori Student Advisors.

The Pūhoro Māori STEM Academy is located at Massey.

The programme is designed to guide secondary school students through NCEA, and prepare them for tertiary study in the Sciences.

Manawatahi is the Māori Students' Association at Massey University's Manawatu campus in Palmerston North. Te Waka O Ngā Ākonga Māori Inc. is the Māori Students' Association at the Albany Campus.

WEBSITE KEY WORD SEARCH: Māori, Māori Student Advisors, Pūhoro

www.massey.ac.nz/massey/maori/maori-student-services.cfm



Pacific at University

Kia orana, Ni sa bula Vinaka, Fakalofa lahi atu, Talofa lava, Taloha ni, Malo e lelei, Fakatalofa atu.

There are a wide range of additional support services available for Pasifika students including – Academic and Study Skill support, Accommodation, Health and Counselling, Recreation and Religious Services.

Pasifika Advisors are based on each campus. Their aim is to aid Pasifika students as they navigate through and out of tertiary education.

WEBSITE KEY WORD SEARCH: Pacific Students

www.massey.ac.nz/massey/students/pasifika-student-services/pasifika-directorate_home.cfm



Te Whare Wānanga o Te Ūpoko o te Ika a Māui

Victoria University of Wellington

Capital Thinking. Globally minded.

Main campus: Wellington

Other campus: Wellington

Victoria draws on its capital city location to carry out world-class research, teaching and to make connections here and around the world. It is proud of its inclusive, diverse and vibrant community and is committed to providing a student experience that is second to none.

Faculties

Architecture and Design

Education

Engineering

Health

Humanities and Social Sciences

Law

Science

Victoria Business School

Student population

Total (EFTS)	17,390
Total (Students)	21,950
Pre-degree	780
Undergraduate	16,052
Postgraduate	5,674
Domestic	19,671
International	2,279
Māori	2,151
Pasifika	1,297
Part-time *	7,748
Full-time *	14,210

*2016 data. Source for table: Education Counts, Tertiary Statistics/Participation.

0800 VICTORIA (0800 842 867) | victoria.ac.nz



E Ngā Ākonga Māori

Nau mai, haere mai ki te Whare Wānanga o Te Ūpoko o te Ika a Māui

Te Herenga Waka Marae is on the Kelburn campus. It provides a tūrangawaewae for taura and staff.

Support services for taura include; Māori mentoring Programmes Study Wānanga, Māori Learning Advisors and study skills workshops.

Te Pūtahi Atawhai offers an academic mentoring programme for Commerce, Humanities and Social Sciences, Education and New Zealand School of Music taura.

Te Rōpū Āwhina is the on-campus whanau support for taura Māori within the Faculties of Science, Engineering, and Architecture and Design.

Ngāi Taura – the Māori students' association, represents the interests of taura Māori studying at Victoria University.

WEBSITE KEY WORD SEARCH: Māori, Te Pūtahi Atawhai, Te Rōpū Āwhina

www.victoria.ac.nz/maori-at-victoria



Pacific at University

Talofa lava, Kia orana, Mālō e lelei, Ni sa bula vinaka, Faka'alofo lahi atu, Fakatalofa atu, Kam na mauri, Gud de tru, Kaselehlie, Halo olgeta, Ia orana, Aloha mai e

Victoria has a university-wide commitment to raising Pasifika participation and academic success.

It provides a wide range of Pasifika student support services to ensure a successful university experience for all students.

The Pasifika Liaison Officer can assist you and your family with course planning, entrance and admission information and any questions about study.

There is also a dedicated Pasifika Learning Advisor within the Student Learning Centre.

WEBSITE KEY WORD SEARCH: Pasifika

www.victoria.ac.nz/vicpasifika



Te Whare Wānanga o Waitaha

University of Canterbury

Be prepared to change the world.

Main campus: Christchurch

One of the top universities in New Zealand, the University of Canterbury has gained an international reputation for academic excellence in teaching and research. The University's undergraduate and postgraduate programmes are recognised worldwide.

Colleges

Arts

Business and Law

Engineering

Education, Health and Human Development

Science

Student population

Total (EFTS)	11,865
Total (Students)	14,570
Pre-degree	390
Undergraduate	8,600
Postgraduate	6,015
Domestic	12,690
International	1,880
Māori	1,035
Pasifika	435
Part-time *	3,240
Full-time *	9,455

*2016 data. Source for table: Education Counts, Tertiary Statistics/Participation.

0800 827 748 | canterbury.ac.nz



E Ngā Ākonga Māori

Nau mai, haere mai ki te Whare Wānanga o Waitaha

Te Whare Ākonga o Te Akatoki is a space where tairira Māori can study, relax and meet other tairira Māori.

A range of ākonga Māori support services offered through the Māori Student Development Team (MDT) at UC – UC Māori Orientation, Celebration for Māori, the Tuākana and Te Punenga Mentoring support programmes and academic support.

Te Whare Ākonga o Te Akatoki is a dedicated study space for ākonga Māori. The whare has many facilities including a kitchen, showers, computers and rooms that can be booked for study sessions when required. Many events are held here throughout the year. This is a great space to meet other ākonga Māori, relax and study.

Te Akatoki Māori Students' Association (TA) also offer many social activities including whānau days, Pō whakangahau, Kapahaka and more.

WEBSITE KEY WORD SEARCH: Māori, Tuākana Mentoring
www.canterbury.ac.nz/future-students/get-the-support-you-need/maori-students/



Pacific at University

Talofa lava, Malo e lelei, Kia orana, Ni sa bula vinaka, Halo olaketa, Namaste, Kam na mauri, Fakaalofa lahi atu, la orana, Mahalo, Malo ni, Kia ora and warm Pasifika greetings.

Pacific-friendly support services have been designed to ensure that Pacific students get the most out of their studies.

Pacific Development Mentors provide one-to-one peer support to Pacific students in their first year of study, and additional support is offered through the PASS (Pacific Academic Solutions and Success), Postgraduate and Education Support programmes.

The Pasifika Student Fale (House) is a dedicated space Intended for academic, social and cultural gatherings.

Pacific Events like Get Fresh, Refresh, Pasifika Welcome Day, Jandals and Pasifika Graduation all help our students to feel at home, supported and part of the wider University community.

WEBSITE KEY WORD SEARCH: Pacific
www.canterbury.ac.nz/future-students/get-the-support-you-need/pacific-students/



New Zealand's specialist land-based university

Te Whare Wānaka o Aoraki

Lincoln University

New Zealand's specialist land-based University.

Main campus: Lincoln

Lincoln University has a 138-year history of providing high quality education and research to New Zealand's most important economic driver, the land-based sectors. As a small and specialist university, Lincoln's qualifications range from certificate level through to PhD – and our teaching and research covers all activity associated with the land-based sectors to meet the needs of not only New Zealand but also the world.

Faculties

Agribusiness and Commerce

Agriculture and Life Sciences

Environment, Society and Design

Student population

Total (EFTS)	2,770
Total (Students)	4,605
Pre-degree	2,410
Undergraduate	1,795
Postgraduate	650
Domestic	3,680
International	925
Māori	485
Pasifika	90
Part-time *	1,810
Full-time *	1,870

*2016 data. Source for table: Education Counts, Tertiary Statistics/Participation.

0800 10 60 10 | lincoln.ac.nz



LincolnUniNZ



Lincoln University
New Zealand



LincolnUniversityNZ



LincolnUniNZ



lincolnuninz

E Ngā Ākonga Māori

Nau mai ki te Whare Wānaka o Aotearoa

Māori students at Lincoln will gain an excellent qualification in a fun, friendly and supportive environment.

There are a range of support services for Māori students including Academic and Learning support.

Te Awhioraki is an organisation that represents all Māori students on-campus.

WEBSITE KEY WORD SEARCH: Māori Students

www.lincoln.ac.nz/Future-Students/Maori-Students/



Pacific at University

Kia Orana, Talofa Lava, Kia Ora, Malo e lelei, Nisa Bula
Vinaka, Fakaalofa Lahi Atu, Taloha ni, Fakatalofa atu, Halo oloketa.

Lincoln University has a longstanding association with the Pacific region and its communities and aims to contribute to the educational and economic aspirations of Pacific people both within New Zealand and in the wider Pacific region.

There are a range of support services both academic and pastoral are located on campus.

WEBSITE KEY WORD SEARCH: Pasifika

www.lincoln.ac.nz/Lincoln-Home/Future-Students/Pasifika-Students/





Te Whare Wānanga o Otāgo

University of Otago

'Only Otago' for Academic Excellence and Outstanding Experience.

Main campus: Dunedin

Otago's specific research strengths are in the medical, biomedical, biological and natural sciences, the liberal arts, and law. Otago's outstanding academic reputation, strong research culture, and vibrant campus lifestyle attract highly-talented students from all over New Zealand and overseas.

Faculties

Health Sciences

Humanities

Sciences

Otago Business School

Student population

Total (EFTS)	18,395
Total (Students)	20,690
Pre-degree	420
Undergraduate	16,020
Postgraduate	4,660
Domestic	17,920
International	2,770
Māori	1,765
Pasifika	810
Part-time *	3,085
Full-time *	14,835

*2016 data. Source for table: Education Counts, Tertiary Statistics/Participation.

0800 80 80 98 | otago.ac.nz

E Ngā Ākonga Māori

Nau mai, haere mai, ki Te Whare Wānanga o Otago

Otago taura Māori and their whānau have access to a wide range of support services, as well as scholarships and a dedicated School of Māori, Pacific and Indigenous Studies: Te Tumu.

The Māori centre – Te Huka Mātauraka offers a home away from home for taura Māori, from pre-enrolment, Turāka Hou – Māori Orientation – through to pre-graduation celebrations, graduation and beyond.

Te Rōpū Māori o Te Whare Wānanga o Otago is the Māori Students' Association.

WEBSITE KEY WORD SEARCH: Māori, Māori Centre
www.otago.ac.nz/prospectivestudents/maori/index



Pacific at University

Kia Orana, Talofa Lava, Kia Ora, Malo e lelei, Nisa Bula Vinaka, Fakaalofa Lahi Atu, Taloha ni, Fakatalofa atu, Halo oloketa, Mauri, Fakatalofa atu.

The Pacific Island Centre, Te Pokapū mā kā ākoka o kā Mouutere o Te Moana Nui a Kiwa supports Pacific students, their families and communities at Otago University.

The centre offers Academic Mentoring through the Taimane programme, and can offer tutorial sessions. Supervised study nights are also held.

WEBSITE KEY WORD SEARCH: Pacific, Pacific Students
www.otago.ac.nz/prospectivestudents/pacific/index

What to Study and Where?

He aha, kei
hea tāku ako?

There are a couple of key things that are important for you to know when deciding what and where to study;

Our 'What to Study and Where?' guide has been designed for you to see all the majors on offer, and under which 'Bachelor' qualification.

What is a 'Bachelor's' qualification? Or any qualification for that matter?

Our 'Qualifications' section lists all of the types of undergraduate qualifications available in New Zealand.

It also gives you an idea of what you can study after completing your Bachelor's degree.



Qualifications He Aha te Tohu?

University Preparation programmes (NZQF Levels 4/5)

All universities have Foundation pathways for students who need further English language, academic and study skills preparation prior to undertaking undergraduate study. Foundation programmes generally run for up to one year of full-time study.

Bachelor's degree (NZQF level 7)

Is normally three years in duration (full-time) and consists of a prescribed number of papers or courses. Typically, a Bachelor's degree offers a great deal of flexibility, and the opportunity for students to choose a programme that is appropriate for them.

Bachelor's degree with Honours (NZQF level 8)

Is a one-year programme of study following a Bachelor's degree or an integrated four-year programme, requiring more specialised study in the chosen major subject and frequently involving some independent research or investigation.

Graduate Diploma (NZQF level 7)

A one-year, full-time course of study for graduates. Prior learning or experience in the subject matter of the diploma is not always required, giving graduates an opportunity to add a qualification in a different major subject to that of their first degree. A Graduate Diploma may also be used as a bridging qualification to specialist postgraduate study.

Postgraduate Diploma (NZQF level 8)

A one-year full-time course of study that builds on the same subject matter in the academic field of a relevant Bachelor's degree.

Masters' degree (NZQF Level 9)

The Master's degree is open to those who have completed a Bachelor's degree with good grades, and comprises 1–2 years of advanced study in the student's major discipline.

Doctorate (NZQF level 10)

A Doctorate is normally the highest academic qualification available within a university. The main doctorate is the PhD (Doctor of Philosophy). This degree can be taken in any one of the wide range of subjects and involves original and sustained research under academic supervision. A PhD usually takes at least three years of full-time study.

LEVEL QUALIFICATION TYPE

LEVEL	QUALIFICATION TYPE
1-4	Certificates
5-6	Diplomas
7	Bachelor's Degrees Graduate diplomas and Certificates
8	Postgraduate diplomas and Certificates Bachelor's Degrees with Honors
9	Master's degrees
10	Doctorates

Conjoint Degrees

A specialised programme of study that leads towards two degrees are studied for at the same time (e.g. Bachelor of Arts and Bachelor of Commerce).



Bachelors

Qualification	Major	The University of Auckland	Auckland University of Technology	The University of Waikato	Massey University	Victoria University of Wellington	The University of Canterbury	Lincoln University	The University of Otago
Bachelor of Arts	Theological and Religious Studies	Yes							
Bachelor of Arts	Translation		Yes						
Bachelor of Arts	Writing Studies	Yes		Yes					
Bachelor of Aviation	Aviation				Yes				
Bachelor of Aviation Management	Aviation Management				Yes				
Bachelor of Biomedical Science	Drugs and Human Health								Yes
Bachelor of Biomedical Science	Functional Human Biology								Yes
Bachelor of Biomedical Science	Infection and Immunity								Yes
Bachelor of Biomedical Science	Human Genetics					Yes			
Bachelor of Biomedical Science	Molecular Basis of Health and Disease								Yes
Bachelor of Biomedical Science	Molecular Pathology					Yes			
Bachelor of Biomedical Science	Molecular Pharmacology and Medicinal Chemistry					Yes			
Bachelor of Biomedical Science	Nutrition and Metabolism in Human Health								Yes
Bachelor of Biomedical Science	Reproduction, Genetics and Development								Yes
Bachelor of Building Science	Project Management					Yes			
Bachelor of Building Science	Sustainable Engineering Systems					Yes			
Bachelor of Business / Business Studies	Accounting		Yes		Yes				
Bachelor of Business / Business Studies	Agribusiness			Yes					
Bachelor of Business / Business Studies	Business Information Systems		Yes						
Bachelor of Business / Business Studies	Design		Yes						
Bachelor of Business / Business Studies	Digital Business			Yes					
Bachelor of Business / Business Studies	Economics		Yes		Yes				
Bachelor of Business / Business Studies	Entrepreneurship and Innovation		Yes	Yes					

Qualification	Major	The University of Auckland	Auckland University of Technology	The University of Waikato	Massey University	Victoria University of Wellington	The University of Canterbury	Lincoln University	The University of Otago
Bachelor of Commerce	Economics	Yes				Yes	Yes		Yes
Bachelor of Commerce	Finance	Yes				Yes	Yes		Yes
Bachelor of Commerce	Food and Resource Economics							Yes	
Bachelor of Commerce	Hotel and Tourism Management							Yes	
Bachelor of Commerce	Human Resource Management						Yes		Yes
Bachelor of Commerce	Human Resource Management and Industrial Relations					Yes			
Bachelor of Commerce	Information Management	Yes							
Bachelor of Commerce	Information Science								Yes
Bachelor of Commerce	Information Systems	Yes				Yes	Yes		
Bachelor of Commerce	Information Technology							Yes	
Bachelor of Commerce	Innovation and Entrepreneurship	Yes							
Bachelor of Commerce	International Business	Yes				Yes	Yes		Yes
Bachelor of Commerce	International Trade	Yes							
Bachelor of Commerce	Management	Yes				Yes	Yes		Yes
Bachelor of Commerce	Marketing	Yes				Yes	Yes	Yes	
Bachelor of Commerce	Marketing Management								Yes
Bachelor of Commerce	Operations and Supply Chain Management	Yes					Yes		
Bachelor of Commerce	Public Policy					Yes			
Bachelor of Commerce	Strategy and Entrepreneurship						Yes		
Bachelor of Commerce	Supply Chain Management and Global Business							Yes	
Bachelor of Commerce	Taxation	Yes				Yes			
Bachelor of Commerce	Taxation and Accounting						Yes		
Bachelor of Commerce	Tourism								Yes
Bachelor of Commercial Music	Commercial Music				Yes				
Bachelor of Communication / Communication Studies	Advertising Creativity		Yes						
Bachelor of Communication / Communication Studies	Communication Management				Yes				

Qualification	Major	The University of Auckland	Auckland University of Technology	The University of Waikato	Massey University	Victoria University of Wellington	The University of Canterbury	Lincoln University	The University of Otago
Bachelor of Science	Logic and Computation	Yes							
Bachelor of Science	Logistics and Supply Chain Management				Yes				
Bachelor of Science	Marine Biology		Yes			Yes			
Bachelor of Science	Marine Ecology				Yes				
Bachelor of Science	Marine Science	Yes							
Bachelor of Science	Materials and Processing			Yes					
Bachelor of Science	Mathematics	Yes		Yes	Yes	Yes	Yes		Yes
Bachelor of Science	Medicinal Chemistry	Yes							
Bachelor of Science	Microbiology		Yes		Yes				Yes
Bachelor of Science	Nanoscience				Yes				
Bachelor of Science	Neuroscience								Yes
Bachelor of Science	Oceanography								Yes
Bachelor of Science	Pharmacology	Yes							Yes
Bachelor of Science	Philosophy						Yes		
Bachelor of Science	Physical Geography					Yes			
Bachelor of Science	Physics	Yes		Yes	Yes	Yes	Yes		Yes
Bachelor of Science	Physiology	Yes			Yes				Yes
Bachelor of Science	Plant Biotechnology								Yes
Bachelor of Science	Plant Science				Yes				
Bachelor of Science	Psychology	Yes		Yes	Yes	Yes	Yes		Yes
Bachelor of Science	Statistics	Yes		Yes	Yes	Yes	Yes		Yes
Bachelor of Science	Surveying Measurement								Yes
Bachelor of Science	Zoology				Yes				Yes
Bachelor of Science (Technology)	Animal Behaviour			Yes					
Bachelor of Science (Technology)	Biochemistry			Yes					

Get Ready!

Whakareritia

Deciding to go to university may seem a little overwhelming for you (and your whānau!) so we have put together a timeline and prepared the information you need to help get your studies off to a great start.



Get Started

Key contacts:

School Career Advisers

- Check the Careers NZ website
- Attend Career Expos in your area

CareersNZ: <https://www.careers.govt.nz/>

JAN

FEB

MAR

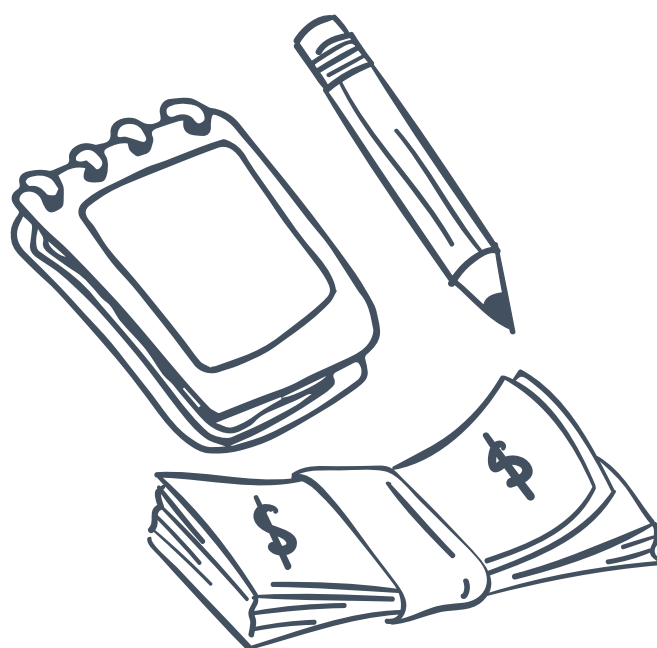
APR

Get Connected

Key contacts:

University Liaison or Recruitment Officers

- Attend a University Visit at your school
- Go to a University Open Day – take a university tour, experience a university lecture, talk with students taking courses to hear about their experiences
- Check out a University Prospectus



Get Planning

Key contacts: University Admissions Office

- Make sure you are on track to get University Entrance (UE). If you are unsure talk to your school
- Not doing NCEA? See the Admissions section for more information on other pathways into university
- Check the universities' Application Deadlines (some programmes have earlier closing dates than others)

MAY

Get Advice

Key contacts: Student Finance Advisors & Course Advisors

Money matters:

- Jobs, scholarships, budgeting advice, living expenses – get advice on money matters
- Think about Living Expenses
- See what support your Student Union offers
- Budget guides are available at each university as well

Study related:

Course advisers can assist you with planning your study year!

Free advice is available any time. Contact the university if you'd like help to:

- Choose your papers
- Choose your qualification
- Complete your Application to Enrol
- Plan your timetable

JUN

Get Applying

Key contacts: University Admissions Office

- Check (and double-check) the entry requirements for the courses you're applying for. Some courses have specific requirements in addition to UE
- Go to our 'Get In' section for more details on what you'll need to apply

JUL

Get a Room

Key contacts: Accommodation & Halls of Residence

- Take a tour of the facilities
- Check the application deadlines
- See the Halls of Residence section

AUG

Did you know NZQA have a NCEA Tracking App?

<http://www.nzqa.govt.nz/audience-pages/students/ncea-app>

Many scholarships for school leavers are based on Year 12 results.

Get a Scholarship

Key contacts: University Scholarships Office

Universities, and other organisations, offer a wide-range of scholarships for university study.

There are scholarships to support:

- Academic achievement
- Māori students, Pasifika students, students with Disabilities, Financial hardship
- Sport and Cultural achievement
- Subject-specific scholarships
- School Leaver scholarships

Generosity www.generosity.org.nz/

Māori Education Trust www.maorieducation.org.nz/index.php/scholarships

Universities NZ undergraduate scholarships
<http://www.universitiesnz.ac.nz/scholarships>

Get Funded

Key contacts:
StudyLink

Apply by 16th December

This will help get your correct payments on time, even if you haven't finalised where or what you're studying. See the StudyLink section.

NOV

Get Accepted

Key contacts:
Admissions Team

- **Conditional offer of place**
Universities may offer you a conditional offer ahead of your school results being released
- **Formal offer of place**
Universities will send a formal offer once school results are released
- **Accepting or declining an offer of place**
The university will send you information about accepting or declining an offer of place

DEC

Get Under Way

Key contacts:
University Student Associations

- **Orientation Week (O Week)** – This is where you'll meet new people and be introduced to the campus, its support teams and services. There are lots of fun events like Concerts, Club Events
- **'Clubs Day'** is where you will find out about the clubs on campus. Sign up to a wide range of sport teams, academic, cultural or social groups.
- **Māori and Pasifika** students, you may be invited to attend a Pōwhiri, or another formal welcoming. Your whānau can come too!

JAN

Get it sorted

Key contacts:
Admissions

Changing your enrolment

- You can drop, swap or add a course for a limited time at the start of each semester
- Check the change of enrolment deadlines or you will be charged for the courses you want to drop

FEB

Take some notes:

Get a Job

Key contacts:
Student Job Search & NZUniCareer Hub

- If you are going to need a job to help with costs at university check out Student Job Search
- Check out 'Career Hub' – an online tool to find work

Career Hub: www.nzunicareerhub.ac.nz/Content/Students.aspx
Student Job Search: www.sjs.co.nz



Get In: Admission to University

Te Whakauru Mai

How do I get into university? There are a range of different pathways into university. If you need further support, contact the university.



University Entrance through NCEA

University Entrance (UE) is the minimum standard for entrance to a New Zealand university.

To qualify you will need:

- NCEA Level 3

Three subjects – at Level 3, made up of:

- 14 credits each, in three approved subjects

Literacy - 10 credits at Level 2 or above, made up of:

- 5 credits in reading
- 5 credits in writing

Numeracy - 10 credits at Level 1 or above, made up of:

- achievement standards – specified achievement standards available through a range of subjects, or
- unit standards – package of three numeracy unit standards (26623, 26626, 26627- all three required).

Check out the 'Other Admission Pathways' if you've missed out on University Entrance.

For more information on University Entrance, go to NZQA's website www.nzqa.govt.nz/ncea

University Academic Calendars

A university's Academic Calendar contains a record of all the University's regulations, policies and course information for the academic year.

An NCEA Level 3 certificate

14 credits at level 3 in an approved subject

14 credits at level 3 in an approved subject

14 credits at level 3 in an approved subject

Literacy:

10* credits at level 2 or above (5 in reading, 5 in writing)

Numeracy:

10* credits at level 1 or above

*From specified list of standards. See www.nzqa.govt.nz



Other school-leaver qualifications

Universities also accept other school-leaver qualifications for admission to an undergraduate degree:

Cambridge International Examinations (CIE) (taken in New Zealand)

To be eligible for admission candidates must achieve the following:

Part A

- a minimum of 120 points on the UCAS Tariff at A or AS level from any syllabus groups from those available in New Zealand (check with a Cambridge school for details) which are broadly equivalent to those in the list of approved subjects for NCEA, and
- a D grade or better in syllabuses from at least three different syllabus groups (excluding Thinking Skills).

Part B

Literacy and numeracy must be satisfied as follows:

Literacy

EITHER

An E grade or better in any one of AS English Language, Language and Literature in English, Literature in English. A 'D' grade or better will satisfy one of the syllabus requirements of Part A

OR

As prescribed for university entrance with NCEA

Numeracy

EITHER

(i) A 'D' grade or better in IGCSE or GCSE mathematics, or

(ii) Any mathematics passed at AS level. A 'D' grade or better will satisfy one of the syllabus requirements of Part A

OR

As prescribed for university entrance with NCEA

International Baccalaureate (IB)

Completion of the Diploma (minimum of 24 points).

An IB Diploma completed with English as Language A1 at either Higher or Standard Level and including any mathematics subject satisfies the literacy and numeracy requirements for university entrance

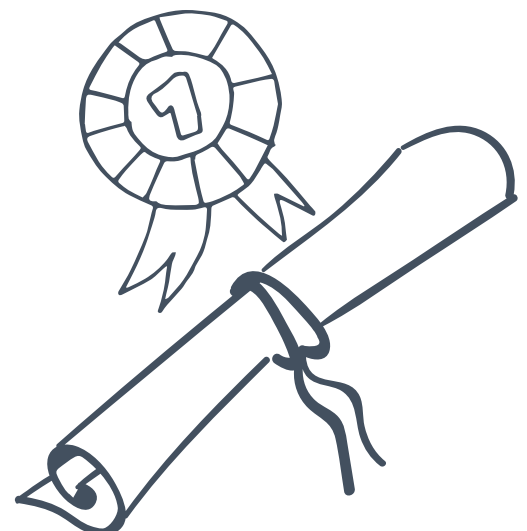
New Zealand Certificate in Steiner Education (Level 3)

A completed Steiner School Certificate Level 3, including 9 points in each of 3 approved subject areas, 7 points in literacy (4 writing/3 reading), and 9 points in numeracy.

Overseas school-leaver qualifications

Universities accept a wide-range of overseas school-leaver qualifications for admission.

Check the university websites for up-to-date information.



Additional entry requirements

Additional entry for some courses of study:

- Some courses of study also require you to have taken NCEA specific approved subjects and gained a minimum number of credits.
- Some universities may need you to have taken specific achievement standards in certain subjects, for entry into some courses.
- Some courses of study also have other requirements such as a portfolio, audition and/or interview.

Selective Entry

- Selective Entry might apply to some courses of study, especially for those with limited or competitive entry.

Guaranteed or Preferential Entry scores

- Some universities use a rank score system for guaranteed or preferential entry into some courses of study, especially for those with limited or competitive entry. The score is based on the number of Level 3 credits you gain with Excellence, Merit or Achieved.
- You may still be accepted into a course of study if you don't meet the rank score but meet the University Entrance standard. Check with the university for the specific details.
- Get the right advice: Check with the university to see if the rank score applies to you and how to calculate your score for that university.

Targeted entry pathways

Some universities have special entry pathways for specific student groups e.g. Māori, Pasifika and students with disabilities.



OTHER ADMISSION PATHWAYS

University Preparation courses

Universities and other providers offer University Preparation courses for students without University Entrance or an equivalent qualification.

Check with the university to see which courses they accept as a suitable entry qualification.

If you didn't get University Entrance this may be an option for you! Contact the university to find out more.

Special Admission for students over 20 (without UE)

If you are over 20 years old and a New Zealand or Australian citizen (or permanent resident) and don't have a University Entrance qualification, you can apply for Special Admission.

Check the university websites for Special Admission application deadlines and what you'll need to provide with your application.

Transferring students


If you're transferring from one degree to another you can apply to have the courses you've already completed credited to your new degree.

Discretionary Entrance

If you are a New Zealand or Australian citizen (or permanent resident) who hasn't continued secondary education beyond Year 12 you can apply for discretionary entrance based on your Year 12 results.

You'll need to have met certain requirements in your Year 12 results, including a reference from your school principal (or another suitable person) and you may need to do an interview. Discretionary Entrance is only for admission into a specific course of study, not general admission into a university.

Check the university website for more information.



Even if you've started your study, you can move to another institution!

Get Sorted – StudyLink, Scholarships, Accommodation

You'll see in the timeline that there are some key things for you to think about. This section looks at a few of these areas in more detail.



There are lots of scholarships available. Really encourage your rangatahi to apply.



Scholarships

Scholarships are a smart way to fund your study. Depending on the scholarship, you might need to provide the following supporting documents with your application:

- Personal statement: academic achievements, leadership, sporting, cultural and community achievements and involvement
- Statement about your study plans and ambitions
- List of accomplishments, awards, leadership positions
- Academic results (e.g. NCEA record of achievement)
- References – different scholarship might require different types of references
- **Academic reference:** supports your academic achievements and ambitions
- **Character reference:**
 - supports your personal qualities and non-academic achievements (e.g. leadership, sporting and cultural activities)
 - identify strong referees for each type of reference
 - confirm that they are willing to be contacted for a written reference (these are usually confidential and submitted directly to the scholarship administrators)
 - provide your referee with information about the scholarships you are applying for and the closing dates.

Remember you can apply for as many scholarships as you like, and at multiple universities!

If you are of Māori decent, make sure you check to see if your iwi offers education scholarships.

There are lots of scholarships available. Really encourage your rangatahi to apply.



StudyLink

It's important that you work out how you are going to fund your study, and living costs. Here's an idea about what you'll need to apply to StudyLink. To find out all the details about what financial support is available from StudyLink; [studylink.govt.nz/starting-study](https://www.studylink.govt.nz/starting-study)

Student Loans – Help you to pay for your course fees (the compulsory fees charged by your education provider), study materials (e.g. books, computer) and living costs.

Just remember it's a loan. You'll have to pay this back.

Student Allowance – This is a weekly payment that can help with your living expenses while you are studying if you are eligible. You don't have to pay the money back, BUT there are conditions.

You can now apply for Student Loans and Allowances online. Make sure you have:

- RealME account to apply online and access your My StudyLink
- RealME verified identity

The documents you'll need to provide for a RealME account include:

- Evidence of who you are (birth certificate or passport)
- Evidence of name change (if you've changed your name)
- Evidence of your bank account number (verified)
- Evidence of your IRD number

If you're under 18 you'll need to supply some additional information.

The StudyLink eligibility test is part of the application process. This tells you what you may be eligible for. You'll need to provide the following information:

- Course details (including start and end dates and study break period)
- Citizenship/residency details
- Income information, if applicable
- Parents' income information (if you're under 24) If you have a child or you're over 24 and you have a partner you'll need to provide additional information. See the StudyLink website for more information
- IRD number and tax code

Parents: StudyLink can only give you information about your part of your child's application (e.g. your income evidence) if they have appointed you as their agent.

www.studylink.govt.nz/starting-study/thinking-about-study/information-for-parents.html

www.studylink.govt.nz

0800 88 99 00

www.realme.govt.nz

0800 664 774

www.ird.govt.nz

0800 775 247



Parents:

Studylink can only give you information about your part of your child's application (e.g. your income evidence) unless they have appointed you as their agent.

Beaverhole Courtyard

Halls of Residence

Halls of Residence (also known as residential colleges) are typically for full-time first-year students. They provide a welcoming community to help you settle into university life.

You will pay rent for your room, and in most cases this will cover, food, power and internet costs. Halls are a great place to get academic support and get involved in social events.

Applications often open around August-September so you'll need to ensure you have all the documentation ready to submit. Places are limited.

In most cases, you'll also need to be prepared to pay a 'Bond' or 'Deposit' if you accept an offer.

A bond is an advanced payment that the hall of residences ask tenants to pay as security to cover any unpaid rent, or damage to the property. A deposit will often cover things like the bond, administration fees and activities fees.

Halls of Residence applications are interested in your child's academic achievements and their personal qualities and attributes.

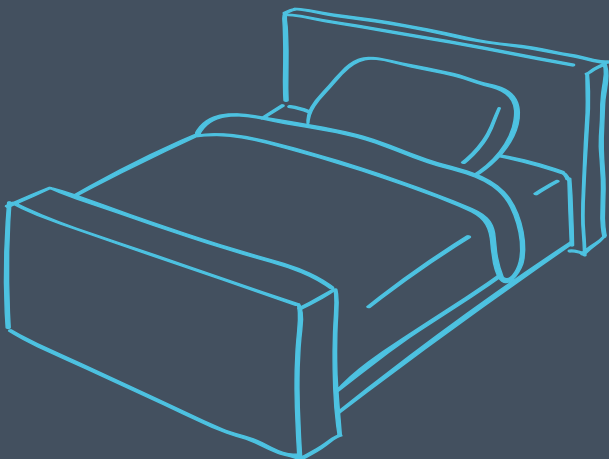
You may need to provide statements and information about the following as part of your Halls of Residence application:


- Personal statement: academic achievements, leadership, sporting, cultural and community achievements and involvement
- Statement about your study plans and ambitions
- List of accomplishments, awards, leadership positions
- Academic results (e.g. NCEA record of achievement)
- A reference from your secondary school
- Photo – Head only

There are sometimes scholarships that can help with Halls of Residence costs. Check out the universities Scholarship pages!

Accommodation

You may choose to flat rather than move into a hall. The universities have Accommodation Offices that can help you with finding a suitable property to rent. They can also provide you with information on costs, lease agreements and finding flat mates.





Halls of Residence applications are interested in your child's academic achievements and their personal qualities and attributes.

A bond is an advanced payment that the hall of residences asks tenants to pay as security to cover any unpaid rent, or damage to the property. A deposit will often cover things like the bond, administration fees and activities fees.

Get More Experience!

Universities offer a range of opportunities for you to experience, connect and explore life as a student. When you're thinking about which university to attend, also look at what additional experiences are on offer.



Study abroad and student exchange

Experience and explore

Study abroad and student exchange programmes are an opportunity to explore and experience overseas study as part of your NZ degree.

- earn credits towards your NZ degree
- graduate with international experience
- pay NZ tuition fees and, if you're eligible, continue to receive StudyLink loans or allowances (see StudyLink for more information).

Summer research scholarships

Explore the world of academic research:

- gain valuable research experience
- develop your research skills
- work with leading researchers
- enhance your career opportunities
- prepare for the possibility of postgraduate study.

Internships and work placements

Connect

Internships and work placements are an opportunity to connect with industry, all as part of your study experience.

- apply your learning to 'real-world' situations
- develop valuable transferable skills
- build your work history.

Further information

To find out more about these opportunities use these 'keywords' to search the university website for more details

[Study abroad](#)

[Internships](#)

[Summer Research](#)


[Work](#)

[Exchange](#)

[Summer Scholarships](#)

Student Life: A Typical Day

To give you an idea of student life, we've put together what a typical day could look like!



LET'S SAY YOU'RE A
FIRST-YEAR BACHELOR OF COMMERCE
STUDENT LIVING IN A HALLS OF RESIDENCE
CLOSE TO CAMPUS!

SEMESTER ONE SCHEDULE

Date



- 8AM:** WAKE UP, GET READY, AND GO TO BREAKFAST IN THE DINING HALL
- 8.45AM:** WALK TO CAMPUS, CATCH UP WITH FRIENDS
- 9AM:** LECTURE 1
- 10AM:** HEAD OFF TO YOUR TUTORIAL CLASS STARTING AT 10AM
- 11AM:** TUTORIAL DONE, TIME TO HEAD OFF TO THE GYM
- 12 NOON:** GO BACK TO THE HALL, SHOWER AND GRAB SOME LUNCH
- 12.45PM:** LECTURE 2 - GUEST LECTURE
- 2.45PM:** GRAB A COFFEE AND GET OVER TO THE STUDENT HUB TO WORK ON YOUR ASSIGNMENT
- 4.30PM:** RETURN TO HALL, MEET UP WITH FRIENDS AND CHILL BEFORE DINNER
- 6PM:** DINNER IN THE DINING HALL
- 7PM:** HEAD TO THE REC ROOM FOR THE HALLS 'MOVIE NIGHT'



A photograph of a man with a goatee and a mustache, smiling, holding a baby in a carrier. He is also holding a laptop. The background is a blurred crowd of people. The entire image has a blue tint.

Glossary

He Kupu Whakamārama

100 level, 200 level, 300 level

There are three main levels at which undergraduate courses are offered by a university, 100 level being first-year, 200 level being second-year, and 300 level being third-year (often the final year of a bachelor's degree). See the NZQF Framework.

Admission Ad Eundem Statum

Ad eundem statum means "with equivalent status".

Domestic students who received their schooling in another country may be eligible for this admission based on their school-leaving qualification. As requirements vary such students should seek advice from the university they wish to attend.

This form of admission is also used for students who have studied in New Zealand and gained a university entrance equivalent such as the CIE examinations or International Baccalaureate.

Universities sometimes charge a fee for this form of admission to cover administrative costs.

Approved Subjects

To qualify for University Entrance, students must complete the required credits in approved subjects at NCEA Level 3. A list of approved subjects for the current year, as well as for previous years, can be found on the NZQA website.

Certificate

A coherent qualification at the pre-degree level with a total value of not fewer than 60 credits and typically not more than 120 credits, which is designed to provide a student with a basic tertiary level qualification in an area of study. Certificates offered by universities are normally at 100 level or higher.

Certificate of Proficiency (COP)

A Certificate of Proficiency (also known as Individual Paper Credit) is not a qualification like a degree, diploma or another certificate. The term is reserved for when a student wishes to take a course at a university without crediting it to a qualification. The reasons for doing so may be simply to pursue a personal interest, improve the chances of employment or make progress towards registration for a profession.

Co-requisites

A specified paper that must be taken at the same time as another paper, unless a student has already successfully completed it.

Course / Paper

Usage varies but either term can refer to the smallest unit of work in which a student can enrol, identified by a unique code, and delivered by means of lectures, tutorials, seminars, etc. or in distance mode by correspondence or electronically. The length of a course is generally one semester.

Diploma

A qualification at the undergraduate or pre-degree level with a total value of not fewer than 120 credits, which may build on defined prior qualifications or experience, of which at least 72 credits must be at the level assigned to the diploma.

Discretionary Entrance

Discretionary Entrance provides a route to university study for students who have not achieved University Entrance. The chief features of the regulations are as follows:

- They apply only to New Zealand or Australian citizens and permanent residents under 20 years of age.
- Applicants must have a minimum of 14 credits in an approved subject at Level 2 towards NCEA.
- Applicants must also have met the literacy and numeracy standards required for University Entrance.
- Application must be made to the university of choice and a fee may be payable.
- A reference from a school principal or another suitable person is required and there may be an interview.

Admission will be at the discretion of the university concerned, with the proviso that a student who has undertaken Year 13 study beyond 1 June at a NZ secondary school may normally not be admitted under the Discretionary Entrance provisions before July in the following year.

Distance Education

An alternative to courses studied on-campus, courses studied by distance learning can be completed at home or in the workplace. Access to resources and student support are usually provided using internet-based media and digital technology. Some courses may include a brief period of on-campus attendance.

EFTS

Equivalent full-time students

Faculty / School / Department / College

A faculty is an academic section of a university dedicated to either a particular discipline (Faculty of Science), or several related disciplines (Faculty of Humanities and Social Sciences). Each faculty contains Schools and/or Departments – academic units that are responsible for teaching a particular subject (Department of Chemistry), or a collection of related subjects (School of Art History, Classics and Religious Studies). A Faculty may also be known as a College.

Foundation Courses, or Programmes

Foundation programmes provide the necessary skills and knowledge for students who do not meet minimum entry requirements for a university course, and help prepare students for university study.

Foundation Certificate

A qualification at the pre-degree level, with a total value of not fewer than 60 credits and not more than 120 credits*, which is designed to provide an introductory and coherent programme that encourages the student to undertake tertiary studies and/or equips the student with the skills needed to successfully attempt a tertiary level course of study.

**Students who have completed Year 13 at a secondary school may take a 60-credit certificate. Students who have completed only Year 12 must take a 120-credit certificate.*

Halls of Residence

Are normally for full-time students who typically stay for the full academic year. It's a type of accommodation. They provide a warm and welcoming community to help you make the most of your time at university.

Internships and Work Placement

An internship or work placement are usually temporary, and generally consist of an exchange of services for experience between the student and an employer.

Lecture

Lectures involve large groups of students and are the core teaching method in most courses.

Major / Major Subject

A substantial component of a degree (usually at least one-third and often consisting of one subject only) selected by the student, in accordance with the regulations, as the principal area of study for the degree.

Minor / Minor Subject

A component of an undergraduate degree, usually of at least 60 credits, in a subject area selected by the student, in accordance with the regulations, to formally recognise a secondary area of study for the degree. Minors need not be a compulsory component of a degree.

NCEA

The National Certificate of Educational Achievement is the national qualification system for secondary school students in NZ. It is administered by NZQA.

O Week

Orientation Week is a period, usually at the beginning of a semester, with the aim of helping new students settle in to their university. It is an opportunity to join clubs, meet new people, and learn some academic study skills.

Open Days

An opportunity for future students to visit the universities, explore different study options, tour the campuses and halls of residence, talk to current students, and get their first experience of student life.

Part-Time / Full-Time Study

A normal first-year workload is usually 120 points for full time students, or less than 96 points for part time students.

A qualification studied part time or full time involves the same work, but the part time qualification will take longer to complete.

Postgraduate Course

Study at 400 level and above, undertaken after attaining a Bachelor's degree in the same or similar subject.

Prerequisites

A paper that must be completed successfully before being able to take another paper or course.

Programme

The requirements set down by a university, in the form of regulations, for the completion of a qualification, generally expressed in terms of eligibility to enrol, duration (years or credits), and the courses to be included, together with regulations covering matters such as practical work, cross-credits and exemptions, preparation and submission of a thesis etc. May also be used for a defined set of courses that do not lead to a qualification.

Also, used by some universities (a) as a synonym for major or (b) in reference to an individual student's selection from the requirements.

Qualification

A degree, diploma or certificate approved in terms of Section 253A of the Education Act 1989; or a degree, diploma or certificate approved by the Curriculum Committee of the University Grants Committee (disestablished 1990) or a degree, diploma or certificate offered by the University of New Zealand (disestablished 1961) and still on the books of the universities.

Satellite Campus

A campus which is physically located at a different location to the main university campus.

Semester / Trimester

A period of approximately 15 weeks, of which 12 – 13 are teaching weeks, and the remainder vacation and examinations.

Special Admission

Persons over the age of 20 years, who are New Zealand or Australian* citizens or permanent residents of either country, may enrol at a New Zealand university without having obtained a university entrance qualification. Further information is available from each university.

*Australian applicants' most recent year of schooling must have been in New Zealand.

Student Union

The Student Union is a representative body that advocates for the interests of students within the university.

Subject

An academic discipline such as economics, anthropology, physics, offered through courses at various levels which are taken sequentially.

Tauira

A Māori word meaning student in this context. Ākonga can also be used to mean student or pupil.

Tutorial

Tutorials are facilitated by a tutor, involve smaller groups of students and are the forum for debating lecture topics, asking questions and seeking any help you need.

University Prospectus

This is a publication that contains specific detailed information about that university.

University Entrance Standard

The minimum standard required for entrance to a NZ University, established by NZQA, may be met in several ways (some of which are no longer available, but students who have met them are eligible to enrol at a university).

Some universities have adopted additional standards for entry, above the university entrance standard, for admission either to some or all their programmes. For more information, visit the universities' websites.

Undergraduate Course

Study at 100 level to 300 level, such as a certificate, diploma, or Bachelor's degree.

Withdrawal date

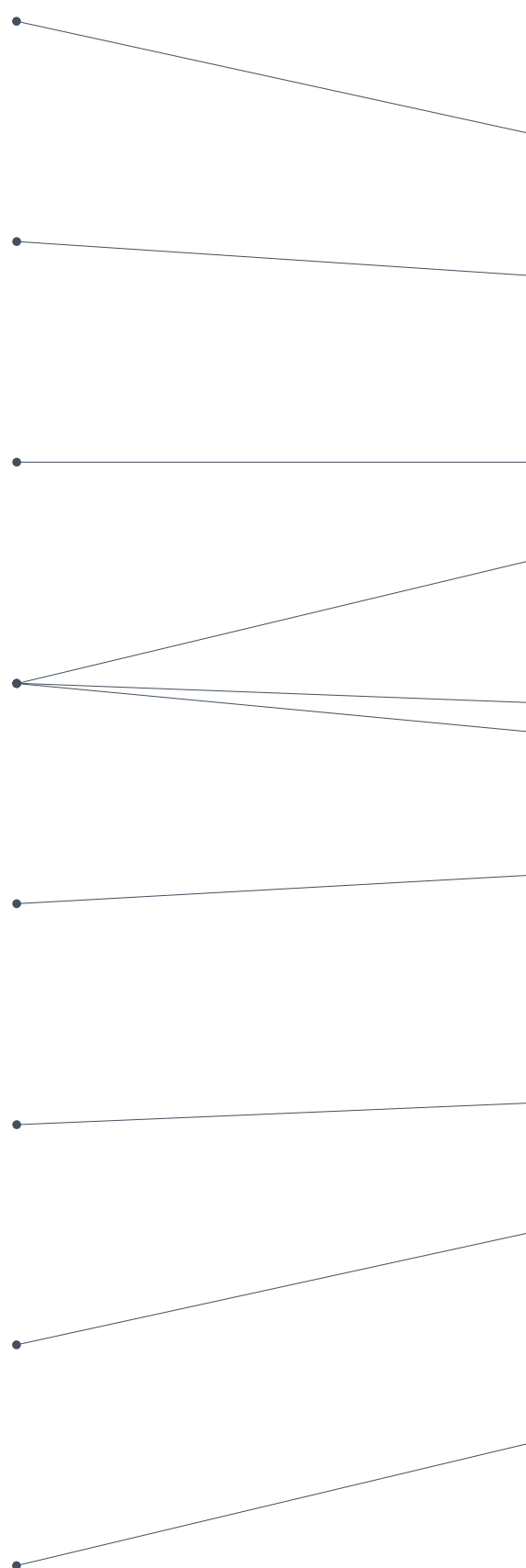
The date that you must withdraw from a course to be eligible for a refund of the course fees.

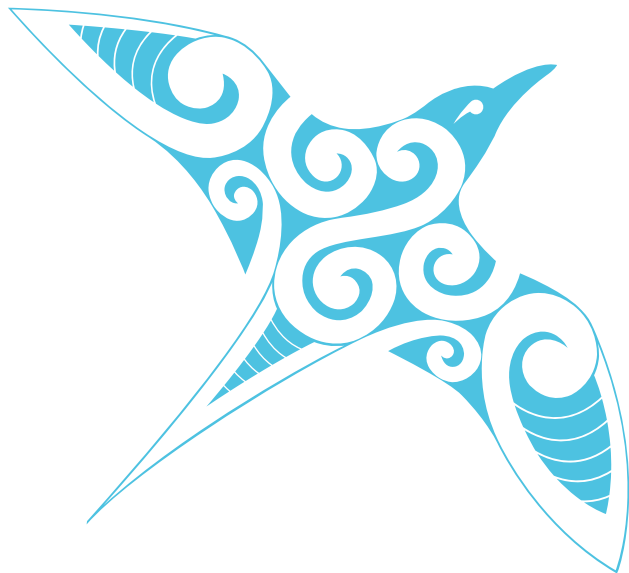
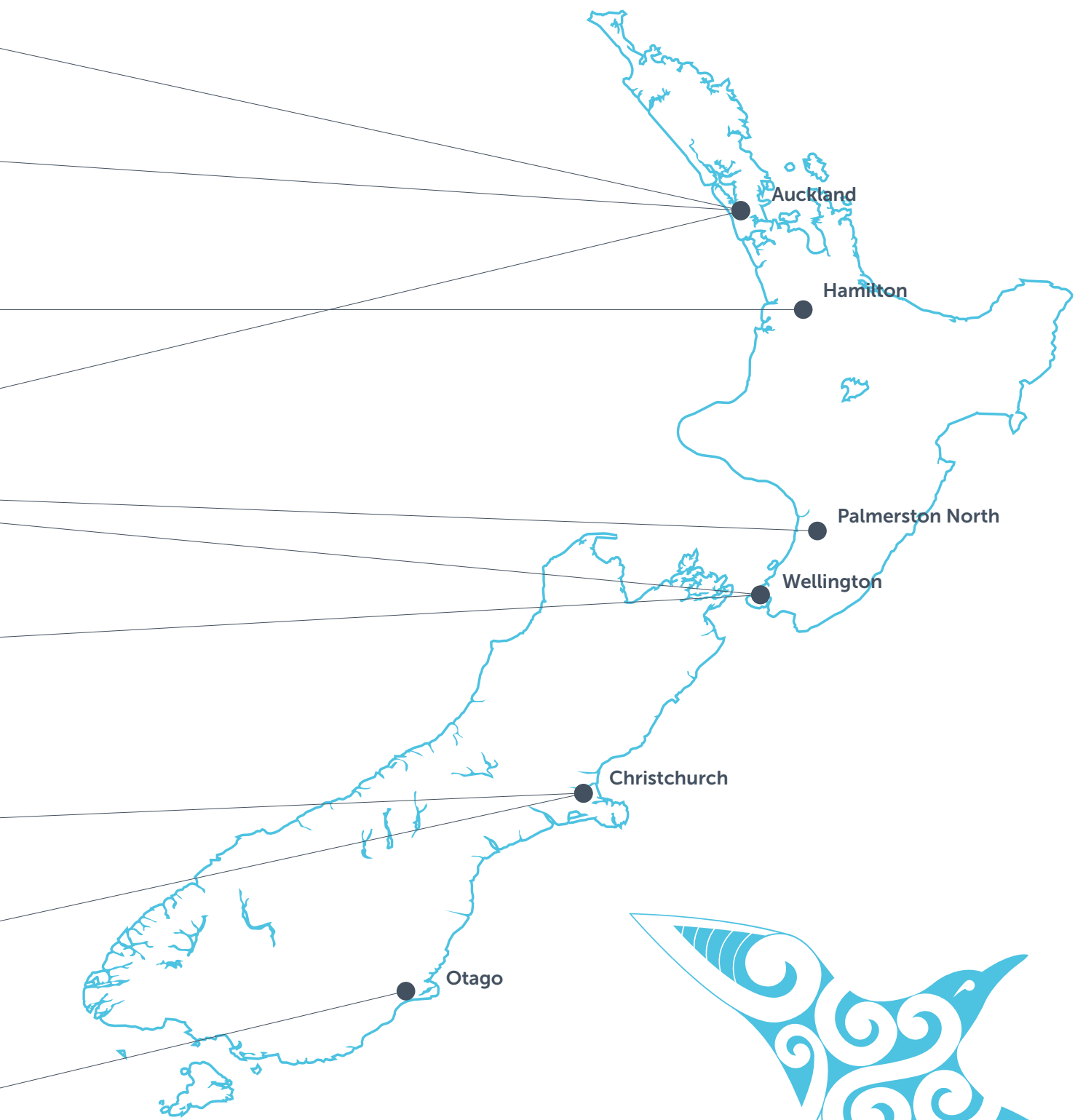
Whaowhia te kete mātauranga

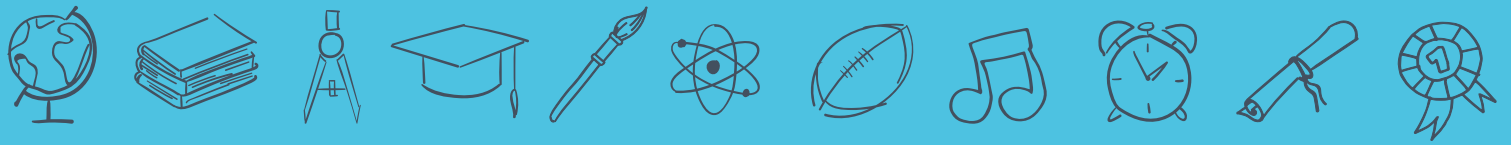
Fill the basket of
knowledge











Te Pōkai Tara
Universities
New Zealand

Universities NZ – Te Pōkai Tara
Level 9, 142 Lambton Quay, Wellington
PO Box 11915, Wellington 6142, New Zealand
Telephone: +64 (04) 381 8500

universitiesnz.ac.nz